

**U.S. Army Corps of Engineers
Fiscal Year 2023
Handshake Program Application**

Please review instructions before completing application!

Corps Lake/River Project Name: **Lake O' the Pines (Ferrells Bridge Dam)**

District / Division:**SWF/SWD**

Handshake Proposal Title: **Dock Kayak/Canoe Launches and Safety Railing**

Corps POC Name:**Justin Shelby**

Telephone:(**409**) **384 - 5716** ext. **239**

E-Mail: **justin.a.shelby@usace.army.mil**

A. Checklist:

1. Will the Handshake funds be spent on Corps facilities and resources that are being fully maintained by the Corps? (not in outgranted parks) Yes No
 2. Will the Challenge Partnership agreement be with a non-federal public or private entity(ies)? Yes No
 3. Is the proposed activity within current authorities and contained in the annual or 5-year work plan in the approved lake project OMP? Yes No
 4. Have all of the NEPA requirements been considered for this project? Yes No
 5. I am aware the Challenge Partnership Agreement must be reviewed and approved by District Office of Counsel before sending to HQUSACE. Yes No
 6. If the full funding amount requested is not available, could a portion of this Handshake Project be completed with partial funding? Yes No
 7. I am aware that all government funds must be spent in accordance with FAR, DFAR and AFAR contracting laws and regulations, and that Handshake funds cannot be provided to the partner(s). Yes No
 8. Did you participate in a Handshake webinar in 2022 or review a 2021 Handshake webinar on the Gateway? Yes No
-

B. Handshake Funding Request (maximum \$25,000): \$18,014

C. Corps Foundation Bonus Request: (maximum \$5,000): \$5,000

Separate bonus funding provided by the Corps Foundation for a selected Handshake Project. Please do not include bonus funds on your overall spreadsheet below. Provide an explanation of how the funds will be used in the Corps Foundation Bonus section.

D. Incentive Points Category: Check the appropriate box if your application qualifies to receive bonus points on the evaluation score.

- This lake/river project has never received Handshake funding. (100pts)

This project will support diversity, equity, and inclusion goals to increase access to a quality recreation experience which includes a safe and healthful environment for a diverse population. At least one of the partner organizations in this project has diversity equity, and inclusion goals as part of their mission. Please describe how your project meets this objective in the Support Diversity, Equity and Inclusion Bonus section. (100 points).

This project will address a backlog maintenance issue identified in the budget process or FEM. Please describe specifically which back log maintenance item(s) will be solved. (100 pts)

E. Describe your partnership and the proposed Handshake Partnership Project:

Project applications will be evaluated on the categories below. Please complete each section as appropriate.

Summary Statement:

Lake O' the Pines maintains and operates 4 courtesy EZDock (dock) systems on the reservoir, strategically located at recreational facilities to maximize ease of use to its 650K annual visitors. All docks are currently open floating platforms with minimal safety railing, in which the proposed project would retrofit the already existing docks with safety railing in an ADA compliant form while still allowing utilization as a courtesy dock. In addition, three kayak launch platforms will be added to three existing docks and four dock gangways will be properly secured to the shoreline. The lake is seeking funding to purchase the materials; the partner (Friends of Lake O' the Pines) would perform the installation.

Handshake Funding Cost Break Down:

- Three kayak launch platforms - \$6,351.95
- Thirty coupler sets with composite hardware (required for kayak launches) - \$2,195.64
- Four shoreline connection part sets for gangways - \$2,568
- Four sets of 3 Rail handrail pipe 15' long - \$1,540.80
- Sixteen handrail posts sets - \$3,656.83
- Five J-tools for coupler installation - \$642
- Twelve couple hardware nut drivers - \$30.82
- Delivery charge - \$1,027.20
- Total - \$18,013.24 (Rounded up to \$18,014)

O&M Impacts:

EZDock sections/parts have proven to stand up in the harsh Texas summers. EZ Dock uses UV-16-stabilized raw materials in all of its products so parts remain truly tough under the sun and have a longer useful lifetime. Products not using a UV stabilizer typically crack and even disintegrate prematurely. In our climate, we have sections of dock that have been in place for over 10 years with minimal maintenance by USACE staff. Even during record high pools parts and connectors have survived. Another positive benefit from the railing is protection of the dock. Currently, boaters nose up to the dock's end, often striking it head on in windy conditions. Scarring and scratching can be seen on each dock's lakemost portion due to this. The kayak/canoe launch is designed to "cap" the end of the dock and promote pulling up to the side instead of ramming the end, lessening the need to replace \$3,000 dock sections. Dock O&M will decrease, as with the completion of this project the partner will have the primary role of dock inspection and maintenance (savings of approximately \$7,500 per year). The other issue is the improper mounting of the gangways at the shore. In fact, it doesn't exist and the lake has been lucky that damage has not occurred. With proper mounting the gangways as per the manufacturer's specifications, we can ensure at least a 15 year lifespan of the project.

Partnership Value:

This opportunity allows both USACE and the partner to work together to complete a needed project for the community. Working together will continue to increase the relationships and introduce new members to each other in a healthy, physical environment to accomplish a goal orientated mission. The Friends Group was offically stood up approxiamtely two years ago, when flooding and damaging storms took a toll on the lake and its facilities. Projects have been focused on cleaning up and repairing, not adding additional features for the public. This project is the best of both worlds in that it takes existing features and builds on them, creating a maximum return for the customers at a minimal cost. This partnership will provide the fuel to advance other

projects as the Friends Group will be around for many years. With budget uncertainty it is crucial that more projects (even smaller in nature) exist so that the Friends Group continues to leverage the community and resources to the upmost availability.

Recreational Benefit:

Currently, not a single courtesy dock on Lake O' the Pines has a kayak/canoe launch or assistance device. Lake O' the Pines consistently ranks in the top half of camping visitation and day use out of the entire District, ranking 8th out of 25 lakes for overnight stays in FY21. The lake regularly experiences windy conditions making the docks potentially hazardous at any given time during the year. The railing placement is designed to have rails within reach at all times while still allowing access for the courtesy dock to serve its primary function. A recreator does not have to have a mobility impairment to reap the rewards of the railing system; it will make the dock safer for anyone to use. This includes using the dock for boat access, launching a kayak, or simply walking out on the dock to enjoy the view. The railing is also designed to provide assistance for people not just stepping off a dock onto a boat, but something to grab to and pull up on while exiting a boat for the dock. The docks will also look more inviting and aesthetically pleasing with the railing. The kayak/canoe launching feature provides a safer launching environment than the traditional shore. As recreation trends are transitioning from large, expensive vessels to smaller vessels; kayaks are becoming increasingly popular. Kayaks and canoes are also much more affordable, opening up water based recreation to more individuals and families. Our overall goal is for recreators to have the safest and best experience possible.

Environmental Stewardship Value:

The lake has witnessed shoreline erosion from frequent shoreline kayak launch sites in day use areas. This is where day users utilize the same walking path and kayak launch points at the shoreline. The kayak launches and railing systems are also harmless to the environment and 100% recyclable if damaged. Parts are constructed so that they do not release chemicals when ignited and do not corrode. No portions of the kayak launch or dock parts contain foam and 90% of the resources utilized to make the products come from recycled material. The plan will be to include an interpretive educational paddling trail after completion of this project.

Communication & Education Value:

The Friends Group and USACE will promote the project during construction and after completion through as many media outlets as possible, including social media. A similar project at Sam Rayburn generated substantial positive media coverage and regional interest. Both USACE and our partner will have the opportunity to promote our missions, especially the USACE recreation mission, and to demonstrate good water safety practices during a planned media day with news outlets from the multiple counties in the Lake O the Pines footprint. Signage promoting USACE and the Friends group will be installed at each work site. This project will be used as a springboard to construct an interpretive paddling trail, which will further enable us to promote both our recreation and environmental stewardship missions.

Innovativeness:

The end result of this project is that four docks will be safely and securely mounted to the shoreline. The largest dock will be retrofitted with ADA complaint safety railing. Three of the docks will have kayak/canoe launching structures installed. Currently, docks located at Lake O' the Pines do not have a single kayak/canoe launching facility operated by USACE. The closest USACE operated facility is 137 miles away (or over a 2.5 hour drive). The partnership is anticipated to be utilized as a template and spring board for launching other partnerships and projects. The goal will also be to add a kayak/canoe paddling trail utilizing the launchers.

Corps Foundation Bonus:

- Spare kayak/canoe launcher - \$2,117.32
- Paddling trail bouys/hardware - \$2,882.68

Support Diversity, Equity and Inclusion Bonus:

Kayak and canoe users must launch from the uneven shoreline. A launcher/handrail project was recently completed at Sam Rayburn Lake 137 miles away. After completion, a recreator told USACE that his son who has severe mobility issues was able to walk down the dock for the first time without assistance. He had never been able to do that before. The Friends Group's overall mission focuses on diversity, equity and inclusion.

Addresses Backlog Maintenance Issues Bonus:

Gangways are not mounted properly to the shore. This is a known issue and poses a significant structural integrity issue to the docks. The gangways have never been mounted properly and this project will resolve the issue 100%.

Conclusion:

This project will increase safety and ease of use for all users and encourage proper use while protecting the public's assets. With this new opportunity, Lake O' the Pines will be able to further its reputation as a top partner and the public's overall views of the Corps and our mission. This partnership will further enhance the Corps' reputation as the leading provider of outdoor recreational opportunities in the area.

NOTE: To show foresight, commitment, and planning, it is REQUIRED to include maps/pictures/plans/specs as part of your overall package.

Double click on spreadsheet to access data entry fields and to enter Partner names.

You MUST enter partner names into the spreadsheet:

70

	Local Corps Office	Handshake Funds	Lake O' the Pines Friends Group	Partner 2	Partner 3	Partner 4
Salaries	\$960	N/A	\$0	\$0	\$0	\$0
Travel	\$0	N/A	\$0	\$0	\$0	\$0
Materials and Supplies	\$0	\$18,014	\$0	\$0	\$0	\$0
Equipment Use	\$450	\$0	\$0	\$0	\$0	\$0
Funds Contributed	N/A	N/A	\$0	\$0	\$0	\$0
Personal Property	N/A	N/A	\$0	\$0	\$0	\$0
Volunteer	N/A	N/A	\$8,386	\$0	\$0	\$0
In-Kind Services	N/A	N/A	\$0	\$0	\$0	\$0
Other (explain below)	\$0	\$0	\$0	\$0	\$0	\$0
Total	\$1,410	\$18,014	\$8,386	\$0	\$0	\$0
Share of Total Cost	5.1%	64.8%	30.2%	0.0%	0.0%	0.0%
	69.8%					



	Partner 5	Partner 6	Partner 7	Partner 8	Partner 9	Partner 10
Salaries	\$0	\$0	\$0	\$0	\$0	\$0
Travel	\$0	\$0	\$0	\$0	\$0	\$0
Materials and Supplies	\$0	\$0	\$0	\$0	\$0	\$0
Equipment Use	\$0	\$0	\$0	\$0	\$0	\$0
Funds Contributed	\$0	\$0	\$0	\$0	\$0	\$0
Personal Property	\$0	\$0	\$0	\$0	\$0	\$0
Volunteer	\$0	\$0	\$0	\$0	\$0	\$0
In-Kind Services	\$0	\$0	\$0	\$0	\$0	\$0
Other (explain below)	\$0	\$0	\$0	\$0	\$0	\$0
Total	\$0	\$0	\$0	\$0	\$0	\$0
Share of Total Cost	0.0%	0.0%	0.0%	0.0%	0.0%	0

	Partner 11	Partner 12	Partner 13	Partner 14	Partner 15	Total
Salaries	\$0	\$0	\$0	\$0	\$0	\$960
Travel	\$0	\$0	\$0	\$0	\$0	\$0
Materials and Supplies	\$0	\$0	\$0	\$0	\$0	\$18,014
Equipment Use	\$0	\$0	\$0	\$0	\$0	\$450
Funds Contributed	\$0	\$0	\$0	\$0	\$0	\$0
Personal Property	\$0	\$0	\$0	\$0	\$0	\$0
Volunteer	\$0	\$0	\$0	\$0	\$0	\$8,386
In-Kind Services	\$0	\$0	\$0	\$0	\$0	\$0
Other (explain below)	\$0	\$0	\$0	\$0	\$0	\$0
Total	\$0	\$0	\$0	\$0	\$0	\$27,810
Share of Total Cost	0.0%	0.0%	0.0%	0.0%	0.0%	100%

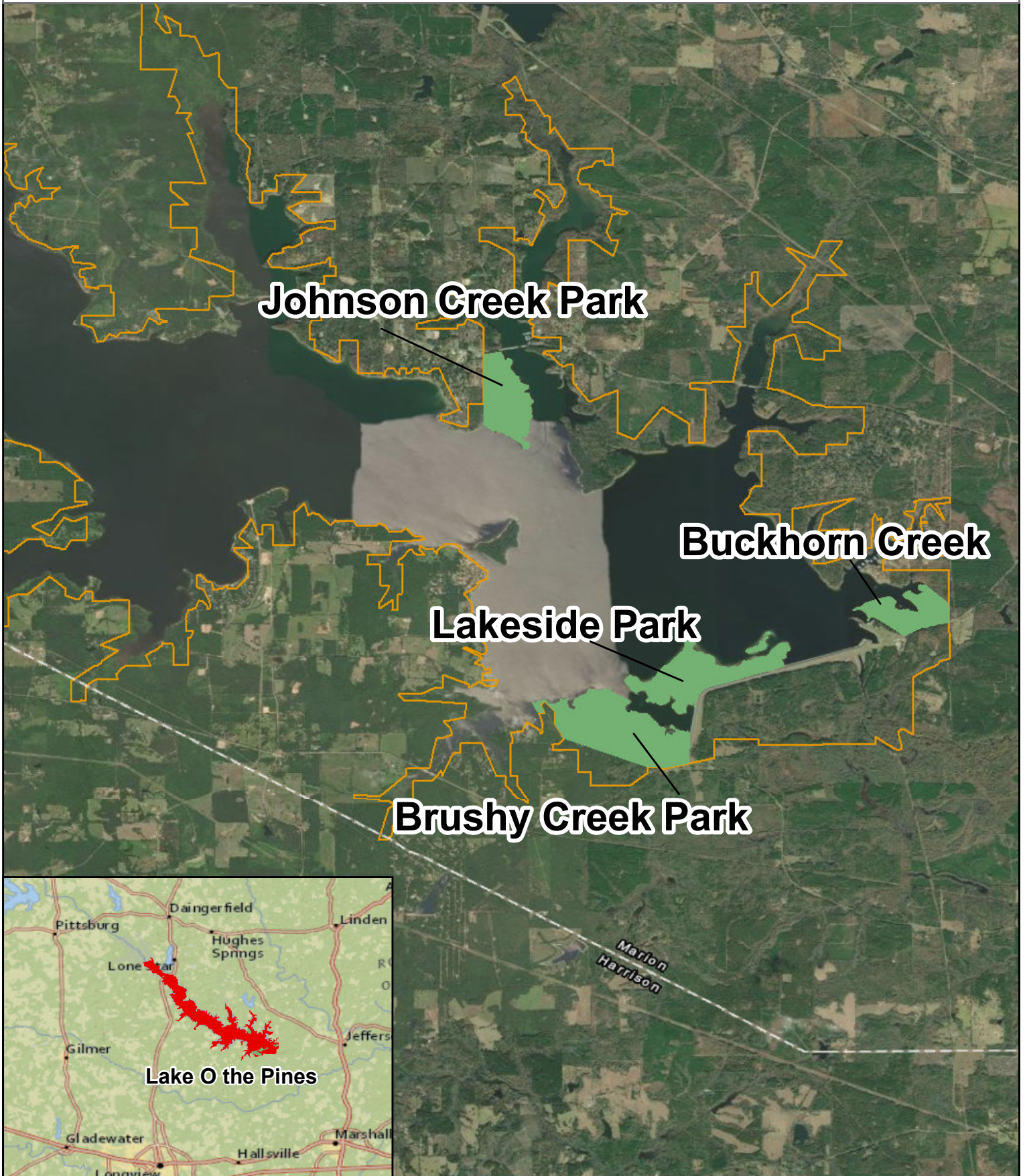
Explanations: USACE – Minimal staff for an entire 8 hours (order and deliver parts) and equipment/trailer cost to deliver to park locations. Partner – 7 people X 5 workdays X \$29.95

Lake O' the Pines Locations for Dock Modifications

Legend

-  Park Area
-  USACE Boundary

0 0.5 1 2 3 4 Miles





Q

POLYETHYLENE POSTS FOR HANDRAILS

SKU# 100900 Categories: [Dock Accessories](#), [Railings](#)

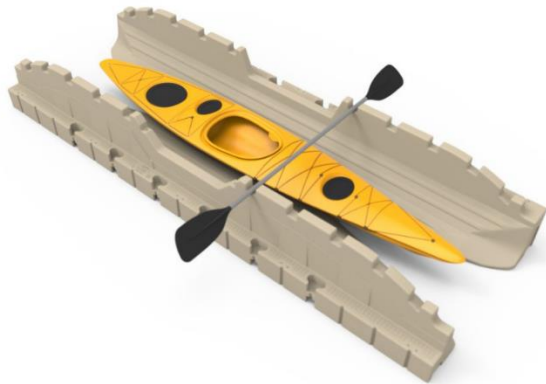
DIMENSIONS: 9" x 9" x 55.5"

DESCRIPTION

This handrail can be used as a grab post or accessory attachment post. It comes with 8 embedded T-nut locations for cleat attachment and recessed holes that can be drilled for tube or rope handrails.

1

ADD TO QUOTE



EZ KAYAK LAUNCH

SKU# 200900 Category: [EZ Kayak Launch](#)

DIMENSIONS: 58.5" W x 168" L x 25" H

DESCRIPTION

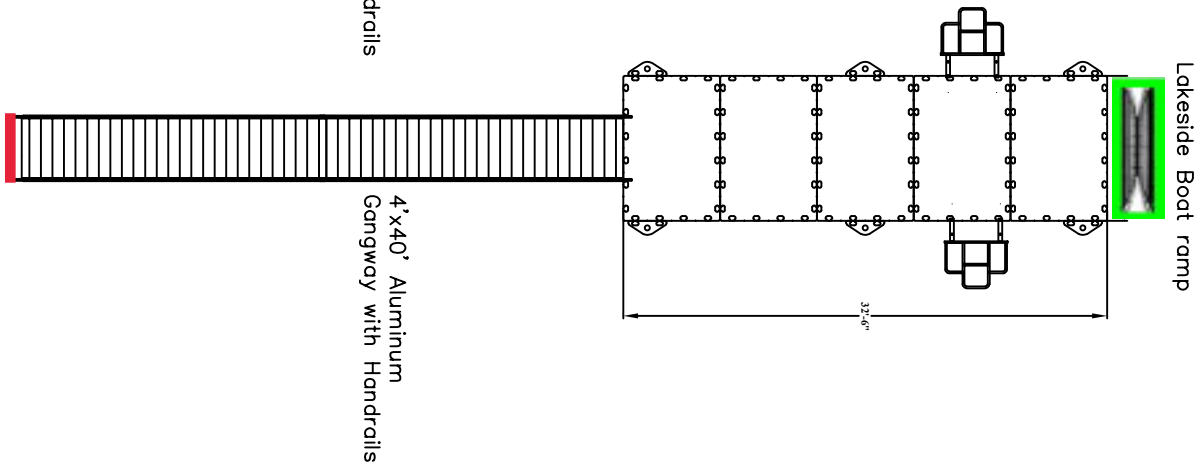
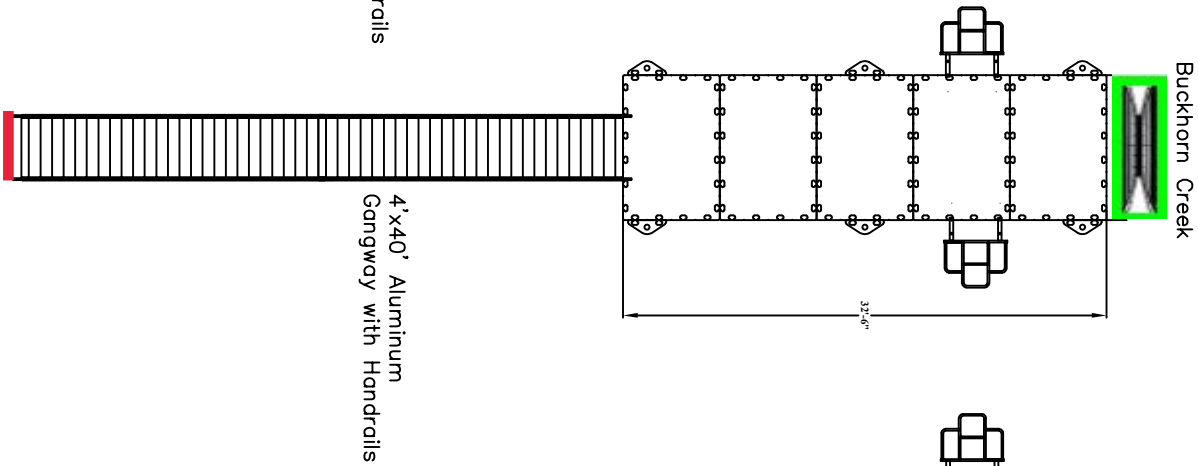
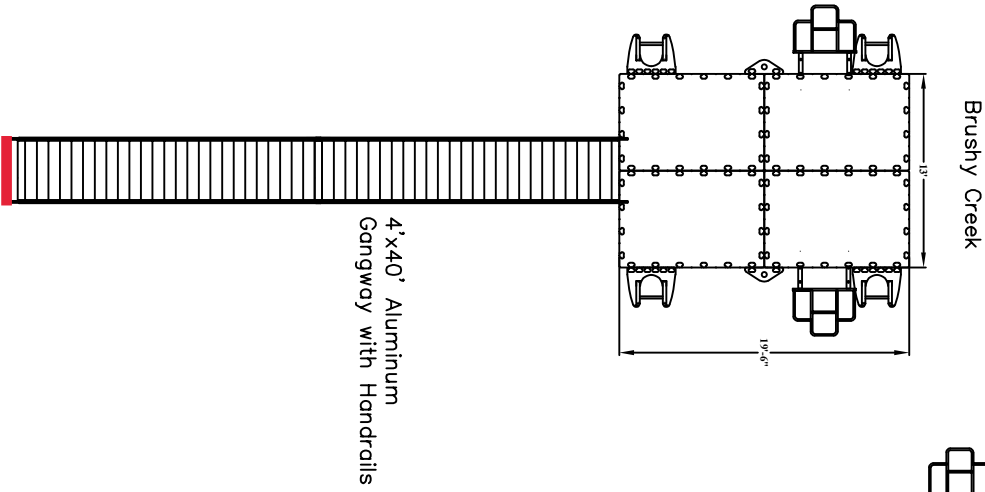
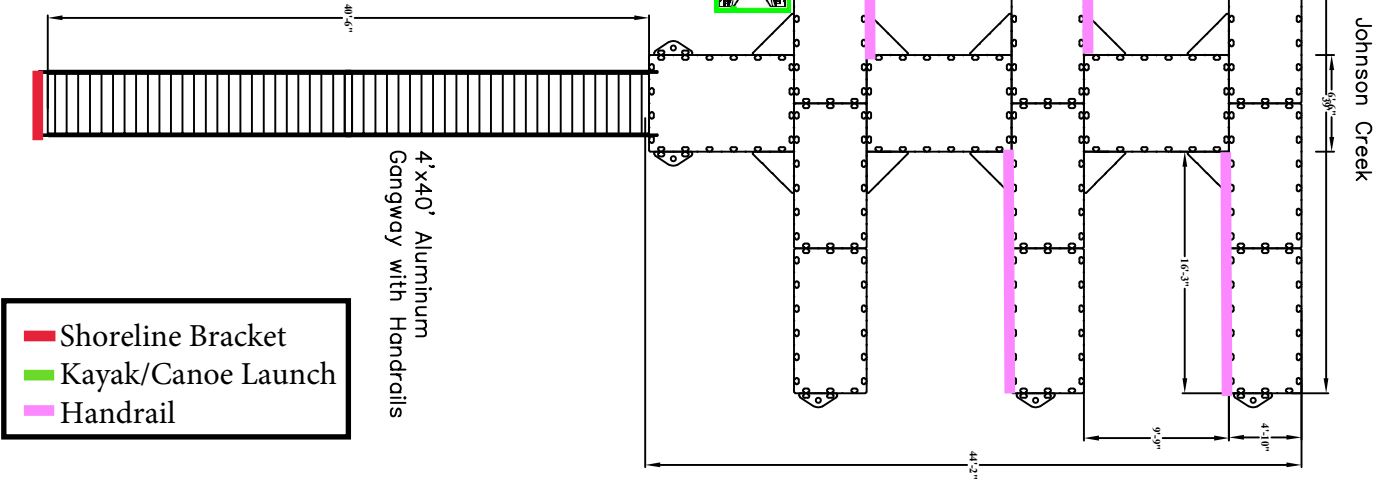
The EZ Kayak Launch was designed from the ground up to provide a new level of stability, security and simplicity for kayaks and canoes. Its one-piece construction, integrated paddle notches and v-shaped entry make launching and docking safe, easy and dry, even as water levels change.

1

ADD TO QUOTE



Kayak/Canoe Launch



Kayak launch and handrail installed within the Region at a different lake.



Handrail installed within the Region at a different lake.

